



LUMA CLASSIC 7400

Contemporary Style Aluminum Garage Doors



Luma Classic 7400

Model BC44, Black Anodized, White Laminate Glass



Luma Classic 7400

Formally marketed as Builder Classic

VALUE



Door: Ltd Lifetime



Hardware: 1 yr



Springs: 1 yr

- Extruded Aluminum
- 1½” Thick Sections
- 3 Finish Colors
- 3 Glass Options

Thermal Rating



Customizations



Low Maintenance



Luxury Level



Section Detail

SECTION DETAIL Luma Classic panels are constructed using heavy duty commercial grade extruded aluminum stiles and rails. Choose any of our three glass options (1/8” Satin Etch, 7/32” White Laminate or 7/32” Black Laminate) and one of our three beautiful anodized finishes: Clear (Standard), Dark Bronze, or Black.

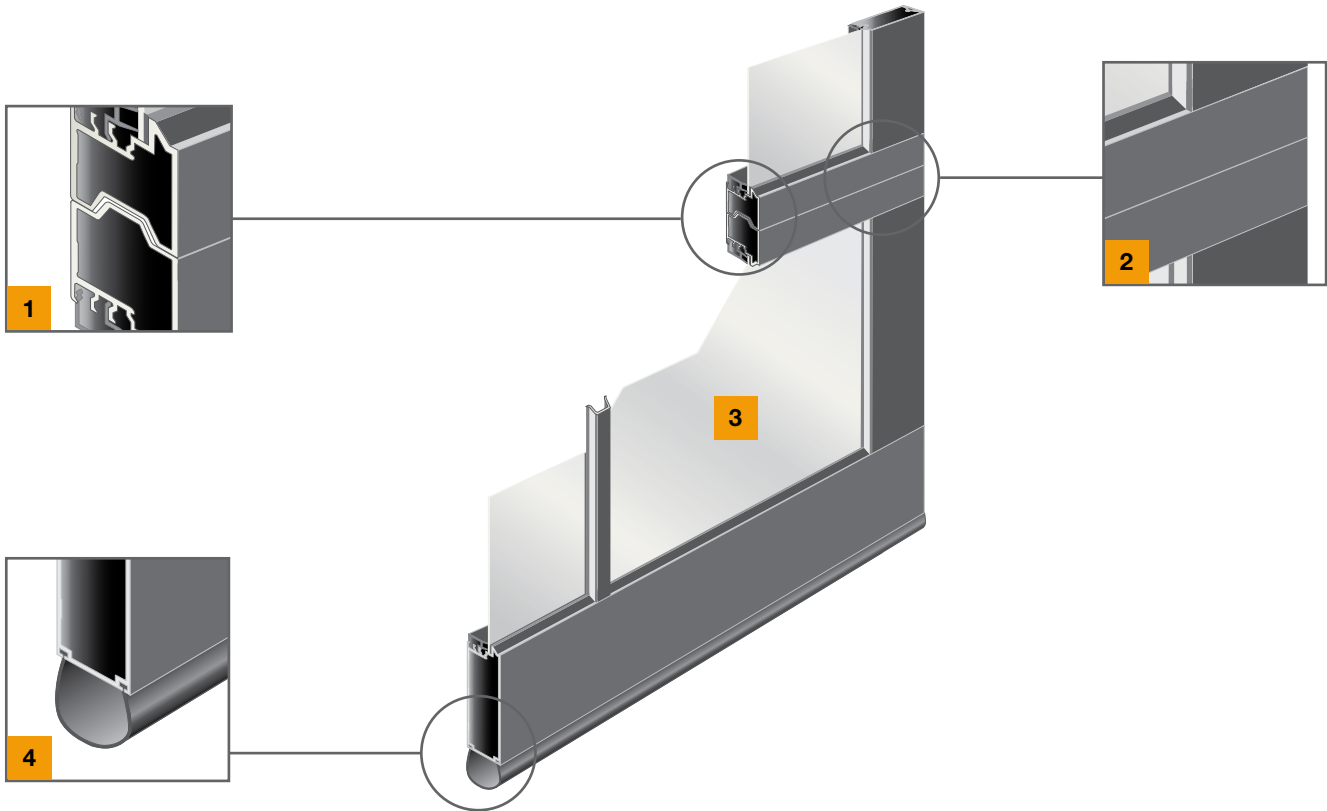
Left Facing Page Image: Model BC44, Black Anodized, White Laminate Glass

Bottom Left Image: Close-up of a black anodized frame with white laminate glass.

Luma Classic 7400

Panel Features

The Industry Leader in Innovative Door Safety, Luxury, and Selection



Tongue & Groove Section Joints **1**

Precisely designed section joints with compressible gasket reduce air infiltration and create weather tight seal.

Glass Options **3**

1/8" Satin Etch Glass, 7/32" White Laminate or 7/32" Black Laminate glass options offer exceptional look.

Anodized Aluminum Frame **2**

Frame members are mechanically fastened at joints creating an exceptionally high strength door frame.

Bottom Weather Seal **4**

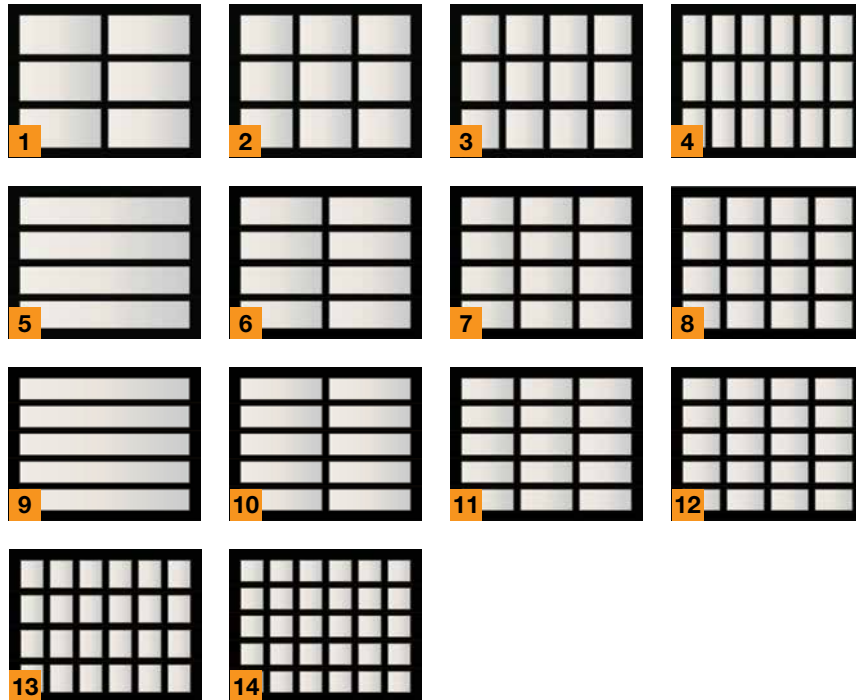
Keeps out wind, rain, debris and other elements for added energy savings.

Door Size	Door Frame Sections/Panels
8' x 7'	4/2
8' x 8'	4/2
9' x 7'	4/2
9' x 8'	4/2
16' x 7'	4/4
16' x 8'	4/4

Panel Design Options (8' x 7')

CHOOSE YOUR PANEL DESIGN.

Panels come in four different styles allowing you to choose the perfect match for the design of your home.



- 1 BC32-SC
- 2 BC33-SC
- 3 BC34-SC
- 4 BC36-SC
- 5 BC41-SC
- 6 BC42-SC
- 7 BC43-SC
- 8 BC44-SC
- 9 BC51-SC
- 10 BC52-SC
- 11 BC53-SC
- 12 BC54-SC
- 13 BC46-SC
- 14 BC56-SC



BC42-SC Anodized Black Finish with Satin Etch Glass

Luma Classic 7400

Panel Design Options

Panel Design Options (16' x 7')

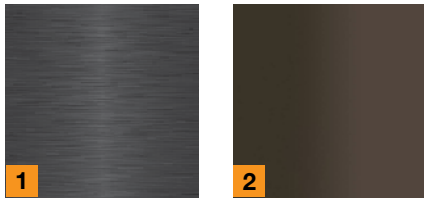
CHOOSE YOUR PANEL DESIGN.

Panels come in four different styles allowing you to choose the perfect match for the design of your home.



- 1 BC34-DC
- 2 BC35-DC
- 3 BC36-DC
- 4 BC38-DC
- 5 BC42-DC
- 6 BC44-DC
- 7 BC45-DC
- 8 BC46-DC
- 9 BC48-DC
- 10 BC49-DC
- 11 BC52-DC
- 12 BC54-DC
- 13 BC55-DC
- 14 BC56-DC
- 15 BC58-DC
- 16 BC59-DC





Color Options

CHOOSE YOUR BEST MATCH.

Panels are available in four standard colors ready for your personal touch to enhance the look of your home.

- 1** Anodized Black
- 2** Anodized Bronze
- 3** Anodized Clear

Glass Options



- 1** White Laminated
- 2** Black Laminated
- 3** Satin Etch

HÖRMANN NORTH AMERICA



Sparta, TN - North American Headquarters / Sectional Doors

FIVE PRODUCTION PLANTS, ONE FAMILY



Puyallup, WA - Sectional Doors



Montgomery, IL - Sectional Doors



Barrie, ON (CAN) - High Performance Doors



Burgettstown, PA - High Performance Doors

As one of the world's leading manufacturers of doors we're committed to providing the best quality, value, and selection.

Whether residential, commercial or industrial, we have the door you're looking for. Each Hörmann product gives you the perfect array of benefits and options to satisfy your customers.

Eastern and Central US

Toll Free: 877.654.6762
Email: info1@hormann.us
Website: hormann.us

Western US

Toll Free: 800.522.2264
Email: info@northwestdoor.com
Website: northwestdoor.com

Canada

Toll Free:
Email: info@northwestdoorcanada.ca
website: nwdca.ca

Follow us on social media



AVAILABLE FROM:

